

NOTES & NEWS

Additional Remarks on the Range of *Trivai myrae* CAMPBELL

BY

JERRY DONOHUE¹

Allan Hancock Foundation for Biological Research²
University of Southern California
Los Angeles, California 90007

RECENT CORRESPONDENCE received following the publication of my paper on the range of *Trivai myrae* CAMPBELL (DONOHUE, 1966) suggests that some clarification may be in order. The legend to the figure reads "Map of the Gulf of California, showing the localities from which *Trivai myrae* has been reported." As it stands, this legend is correct and logically consistent, but a too casual reading of it without careful reading of the text, might lead some to infer that **all** of the localities shown on the map represented localities from which this taxon had been reported (up to the time of the writing of the paper). In the text one finds that *T. myrae* had been reported from the following localities: the channel between Loreto and Carmen Island, off Monserrate Island, off Coronados Island, off Puerto Escondido, off Punta Final, and Puerto Peñasco; these are, of course, designated on the map. Three additional localities, viz. Puertecitos, Guymas, and Mazatlán, are also shown on the map, but it is explicitly stated in the text that *T. myrae* had not (as yet) been reported from them.

Meanwhile, I have been informed of the following additional collecting information for *Trivai myrae*:

- 1) from Mrs. Helen DuShane: outside San Carlos Bay near Guymas in 17 fathoms; outside Puertecitos in 6 fathoms; one mile off Rancho Buena Vista (Baja California del Sur) in 10 fathoms.
- 2) from Mrs. Elsie Marshall: San Carlos Bay, Guymas, in 17 fathoms (probably from the same catch referred to above).
- 3) from Dr. William Emerson: Bochichibampo Bay, Guymas, dredged.

¹ Present address: Laboratorium für Organische Chemie, E. T. H., Zürich, Switzerland.

² Contribution No. 295

It thus appears that my suggestion that *Trivai myrae* should be sought at other mainland localities on the Gulf of California was unnecessary, because it had already been found there.

Finally, Dr. Emerson (private communication) has expressed the opinion "I see no reason why this species should not occur in suitable habitats throughout the Gulf of California, and possibly as far south as Panama Bay." Time will tell.

LITERATURE CITED

DONOHUE, JERRY

1966. The range of *Trivai myrae* CAMPBELL.
9 (1): 35-36; 1 map

The Veliger
(1 July 1966)

Gut Content and Radula Illustration of *Bathybembix bairdi* (DALL, 1889)

BY

JEAN A. MERRIMAN

(1 Text figure)

DALL, 1889, PUBLISHED A BRIEF account of *Bathybembix* (= *Turricula*) *bairdi* in which he described in a general the features of the radula. He considered other morphological features and stated that "the gut was crammed with a greenish mud consisting of disintegrated Foraminifera."

The radulae of four specimens were removed, stained with fast green, and prepared in slides according to the method used by FRITCHMAN (1960). The intact radulae were photomicrographed and then teased apart for microscopic examination. Utilizing photomicrographs and the teased radulae a composite illustration was made of the radular teeth (see Figure 1).

The guts of these four specimens, all collected in Bodega Bay, California, were examined. The greenish mud was found to be glauconite, an amorphous iron potassium silicate. In addition to the glauconite, the following taxa of Foraminifera were found: *Rotaliidae*, *Uvigerina*, *Virgulina*, *Bolivina*, *Cibicides*, *Globigerina*, *Buliminella*, and

Bullimina. Three genera of Diatoms and three genera of Radiolarians were observed as well as one small gastropod.

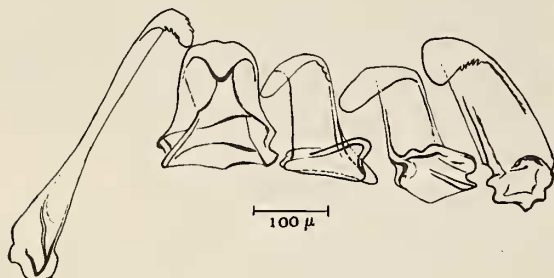


Figure 1

Bathybembix bairdi (DALL, 1889)

Uncinus; Central Tooth; First, Second, and Third Laterals. Note: The third lateral has been rotated 50° to show the bar on the stem which in the intact radula fits into the slot on the base of the second lateral. The blades are very flexible and may assume various positions.

LITERATURE CITED

DALL, WILLIAM HEALEY

1889. Preliminary report on the collection of Mollusca and Brachiopoda obtained in 1887-1888. Proc. U. S. Nat. Mus. 12:

FRITCHMAN, HARRY K., II

1960. Preparation of radulae. The Veliger 3 (2): 52-53 (1 October 1960)

Type Locality Designation for *Dirona aurantia* HURST, 1966

ANNE HURST

Zoology Department, University of Reading
Reading, Berkshire, U. K.

THE ORIGINAL DESCRIPTION of *Dirona aurantia* HURST, 1966 was made from a collection of specimens pooled from three localities. The type specimen was chosen from these not knowing from which of the areas of collection

it had come. For this reason a type locality could not be given more closely, but on consideration of the area and the distribution of this new species, it has been decided that West Blakeley should be designated as the type locality. — Geographical position: West Blakeley, 30-23 fathoms; $48^\circ 34' 30''$ N; $122^\circ 50' 36''$ W.

A. M. U.

The Meeting of the A. M. U. this year will be held in Ottawa, Ontario, Canada, from July 31 to August 4. Arrangements for the conference are in the hands of Dr. A. C. Clarke, Jr., First Vice President. For the various sessions rooms will be available at the National Museum of Canada and at Carleton University.

Principal officers for 1967 are: Dr. Leo G. Hertlein, President; Dr. Clarke, First Vice President; Mr. Gale G. Sphon, Second Vice President; Mrs. Margaret Teskey, Secretary and Mrs. H. B. Baker, Treasurer.

Members of the American Malacological Union, Inc. will receive details regarding the meeting directly from the central office. Non-members are invited to attend the meetings and may obtain details by writing to Mrs. Teskey in Marinette, Wisconsin.

CALIFORNIA MALACOOLOGICAL SOCIETY, INC.

Affiliate Membership in the C. M. S., Inc. is \$6.- for the fiscal year July 1, 1967 to June 30, 1968. Postage for members living in Canada, Mexico, Central and South America 60 cents, for members living in any other foreign country 90 cents additional. Membership open to individuals only - no institutional memberships. Please, send for membership application forms to the Manager or the Editor.

Members receive The Veliger free of further charges and are entitled to purchase one copy of any supplement published during the current membership year at a special discount (to be determined for each supplement).

Effective January 1, 1967 there will be an initiation fee of \$2.- for persons joining the Society. NOTE: No Institutional Memberships are possible in the C. M. S., Inc.

Membership renewals are due on or before April 15